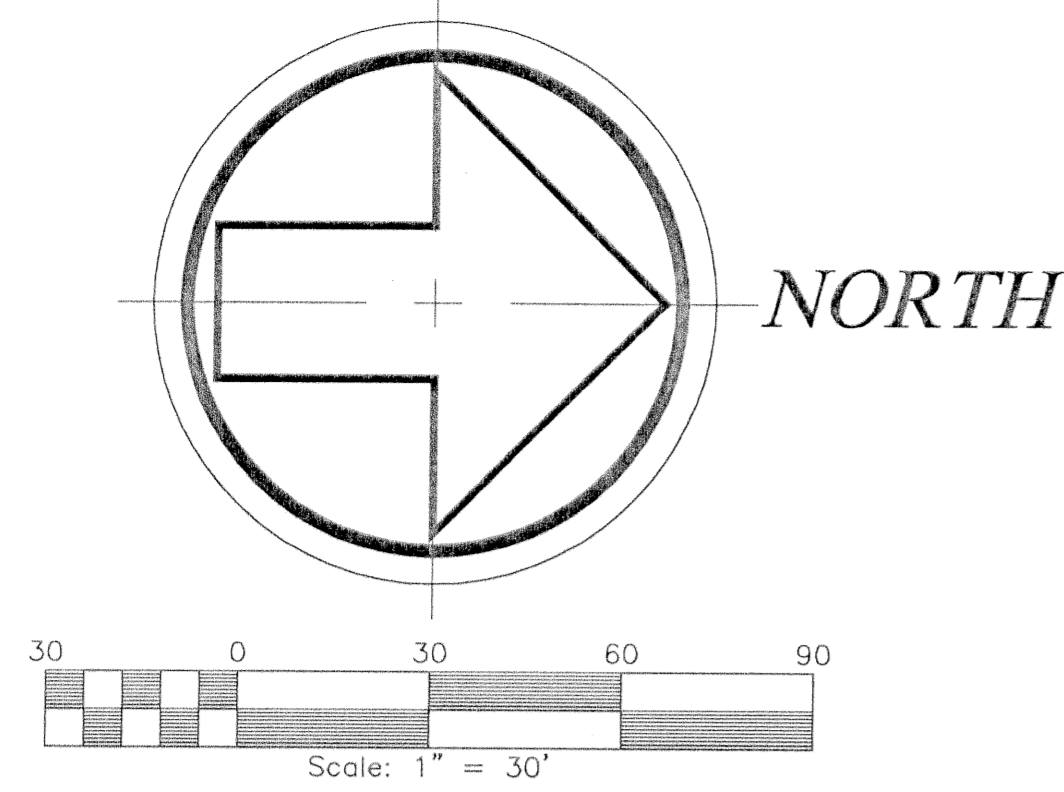


THE MERIDIAN

A REPLAT OF A PORTION OF LOTS 1 THROUGH 6, BLOCK 120, TOGETHER WITH THE WEST 8 FEET OF THE ADJACENT VACATED ALLEY BLANK-NICHOLS SUBDIVISION (PB 13, PG 28, P.B.C.R.) AND A REPLAT OF A PORTION OF BLOCK 120, MAP OF THE TOWN OF LINTON (NOW DELRAY BEACH), FLORIDA (PLAT BOOK I, PAGE 3, P.B.C.R.) IN FRACTIONAL SECTION 16, TOWNSHIP 46 SOUTH, RANGE 43 EAST CITY OF DELRAY BEACH, PALM BEACH COUNTY, FLORIDA

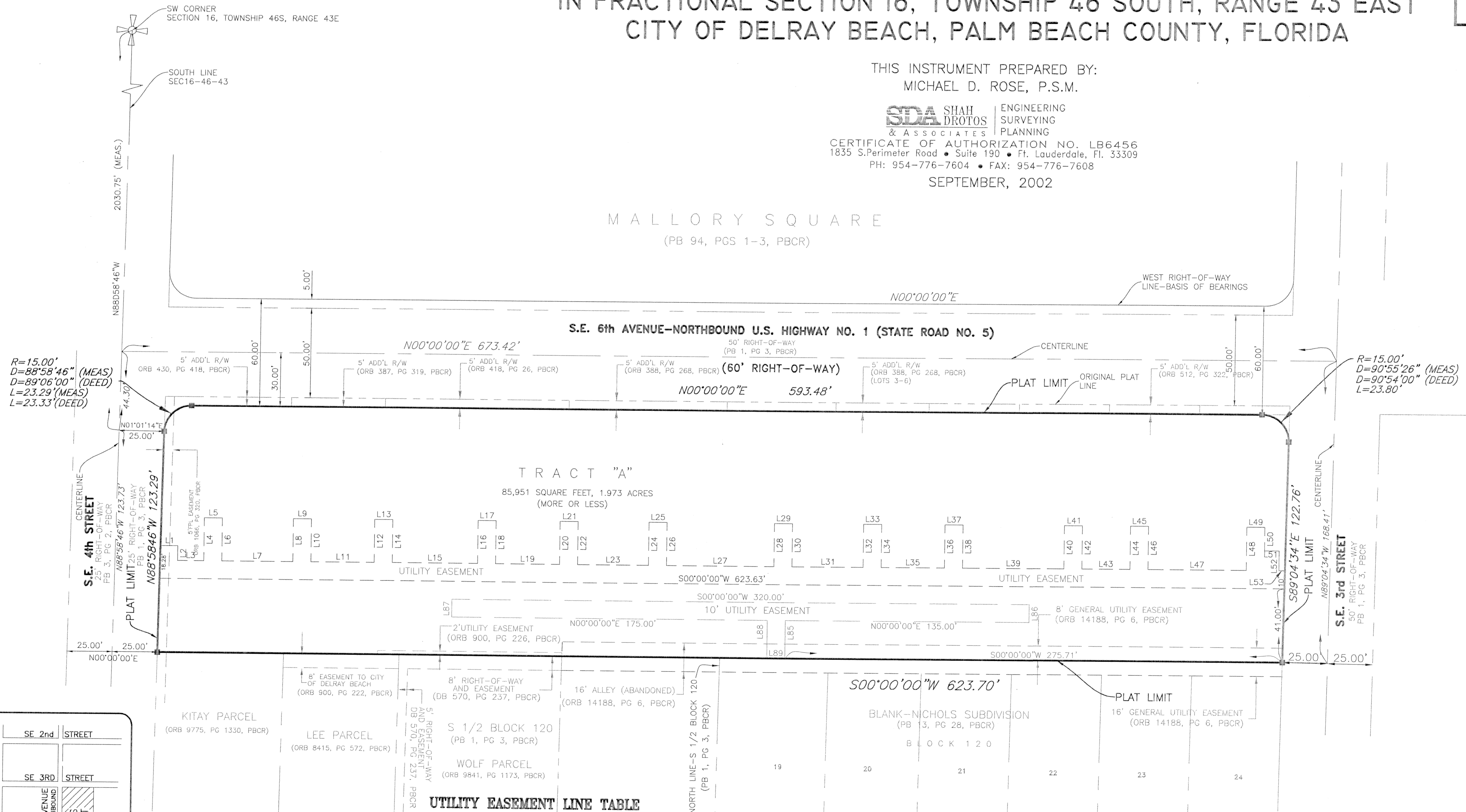
STATE OF FLORIDA
 COUNTY OF PALM BEACH
 SS
 This Plat was filed for record at _____ M., this _____ day of _____, 200____ and duly recorded in Plat Book No. _____ on Pages _____ and _____
 DOROTHY H. WILKEN, CLERK
 BY: _____ DC



THIS INSTRUMENT PREPARED BY:
 MICHAEL D. ROSE, P.S.M.

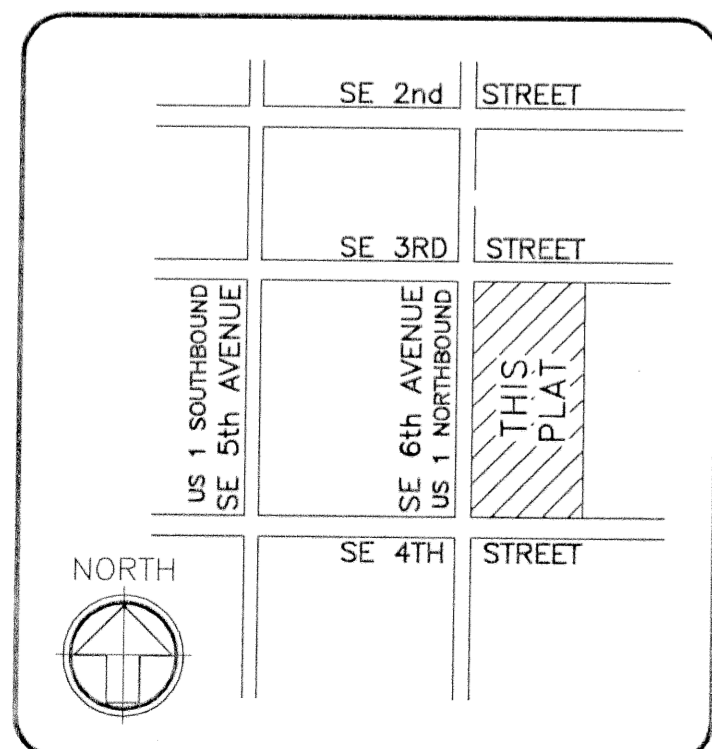
SDA SHAH DROTOS & ASSOCIATES ENGINEERING SURVEYING PLANNING
 CERTIFICATE OF AUTHORIZATION NO. LB6456
 1835 S.Perimeter Road • Suite 190 • Ft. Lauderdale, FL 33309
 PH: 954-776-7604 • FAX: 954-776-7608

SEPTEMBER, 2002



UTILITY EASEMENT LINE TABLE

NUMBER	DIRECTION	DISTANCE	NUMBER	DIRECTION	DISTANCE	NUMBER	DIRECTION	DISTANCE	NUMBER	DIRECTION	DISTANCE	NUMBER	DIRECTION	DISTANCE	NUMBER	DIRECTION	DISTANCE	NUMBER	DIRECTION	DISTANCE			
L1	N00°00'00"W	9.52'	L9	N00°00'00"E	10.00'	L17	N00°00'00"E	10.00'	L25	N00°00'00"E	10.00'	L33	N00°00'00"E	10.00'	L41	N00°00'00"E	10.00'	L49	N00°00'00"E	10.00'	L57	N00°00'00"E	10.00'
L2	N90°00'00"E	8.28'	L10	N90°00'00"E	24.00'	L18	N90°00'00"E	24.00'	L26	N90°00'00"E	24.00'	L34	N90°00'00"E	24.00'	L42	N90°00'00"E	24.00'	L50	N90°00'00"E	13.07'	L58	N90°00'00"W	10.00'
L3	N00°00'00"W	14.55'	L11	N00°00'00"E	35.17'	L19	N00°00'00"E	35.50'	L27	N00°00'00"E	59.48'	L35	N00°00'00"E	35.17'	L43	N00°00'00"E	26.65'	L51	N00°00'00"E	8.08'	L59	S90°00'00"E	10.00'
L4	S90°00'00"W	24.00'	L12	S90°00'00"W	24.00'	L20	S90°00'00"W	24.00'	L28	S90°00'00"W	24.00'	L36	S90°00'00"W	24.00'	L44	S90°00'00"W	24.00'	L52	N90°00'00"E	10.93'	L60	S90°00'00"E	21.00'
L5	N00°00'00"W	10.00'	L13	N00°00'00"E	10.00'	L21	N00°00'00"E	10.00'	L29	N00°00'00"E	10.00'	L37	N00°00'00"E	10.00'	L45	N00°00'00"E	10.00'	L53	N00°00'00"E	3.33'	L61	N00°00'00"E	10.00'
L6	N90°00'00"E	24.00'	L14	N90°00'00"E	24.00'	L22	N90°00'00"E	24.00'	L30	N90°00'00"E	24.00'	L38	N90°00'00"E	24.00'	L46	N90°00'00"E	24.00'	L54	N00°00'00"E	54.50'	L62	N00°00'00"E	24.00'
L7	N00°00'00"E	39.33'	L15	N00°00'00"E	47.33'	L23	N00°00'00"E	39.33'	L31	N00°00'00"E	39.33'	L39	N00°00'00"E	56.18'	L47	N00°00'00"E	54.50'	L55	N00°00'00"E	54.50'	L63	N00°00'00"E	24.00'
L8	S90°00'00"W	24.00'	L16	S90°00'00"W	24.00'	L24	S90°00'00"W	24.00'	L32	S90°00'00"W	24.00'	L40	S90°00'00"W	24.00'	L48	S90°00'00"W	24.00'	L56	S90°00'00"W	24.00'	L64	S90°00'00"W	24.00'



LOCATION MAP
 NOT TO SCALE